



TEREX SS-636C

Rough Terrain Telescopic Boom Material Handler



FEATURES

- **6,000 lb. (2722 kg) capacity**
21 ft. (6.4 m) reach
36 ft. (11.0 m) of lift
- **Patented SQUARE SHOOT full load chart level traverse system optional**
- ISO mounted canopy
- Smooth three section roller boom
- One high quality joy stick controller handles all boom and fork functions
- Self-leveling forks with no separate slave cylinder
- Fast, responsive high angle steering
- Premium hydraulic cylinders
- Dual sway cylinders
- Pressure compensated on-demand hydraulics, 10 micron filtration
- Motion control valves in the lift, boom, fork and sway circuits
- Turbo-charged diesel engine, 3-speed Powershift transmission
- 4-wheel drive, 4-wheel (2-wheel & oblique) power steering
- Oil cooled totally enclosed service brakes
- Spring applied, hydraulic release parking brake
- Planetary axles front and rear, 1300 x 24 12-ply tires
- Removable gauge panel with surface-mounted fuse holder and circuit breakers
- SAE O-ring or JIC hydraulic connections

**simple, available and
cost effective™**

Machines shown may have optional equipment.

TEREX SS-636C SPECIFICATIONS

WEIGHTS with Boom retracted and down

| | |
|---------------|-------------------------------|
| On Front Axle | 8,300 lbs. (3,765 kg) |
| On Rear Axle | 11,200 lbs. (4,128 kg) |
| TOTAL | 19,500 lbs. (7,893 kg) |

DIMENSIONS with Boom retracted and down

| | |
|----------------|----------------|
| Width OVERALL | 8'6" (2.59 m) |
| Height OVERALL | 8'4" (2.54 m) |
| Length OVERALL | 22'5" (6.83 m) |

Wheel Base 9'10" (3.0 m)

Ground Clearance 1'5" (.43 m)

Turning Radius (outside tire) 12'11" (3.94 m)

ENGINE

| | |
|--------------------|--------------------------|
| Make | John Deere Turbo-charged |
| Model | 4045T |
| Power | 100 HP (74.6 kW) |
| RPM | 2500 |
| Fuel Tank Capacity | 30 Gals. (113.6 L) |

TRANSMISSION

Powershift/Converter 3 Speed

BRAKES - Parking

Type Spring Applied, Hydraulic Release
Location 4 Wheels

BRAKES - Service

Type Enclosed, Hydraulic Multiplate, Oil Cooled
Location 4 Wheels

AXLES Heavy Duty Steering Planetaries

WHEELS AND TIRES (Interchangeable)

Wheels Heavy Duty
Tires - Calcium Chloride Solution Filled 1300 x 24 - 12 Ply

TRAVEL SPEEDS - Forward and Reverse

First 3.2 MPH (5.1 km/hr)
Second 6.9 MPH (11.1 km/hr)
Third 17.2 MPH (27.7 km/hr)

STEERING

Power Hydraulic Modes Hydrostatic
2 Wheel, 4 Wheel & Oblique

HYDRAULICS

Single Pump (unloaded during engine start) Axial Piston
Type Flow on Demand
Filtration 10 Micron
Reservoir Capacity 38 Gals. (143.8 L)

SWAY CONTROL- Frame Leveling

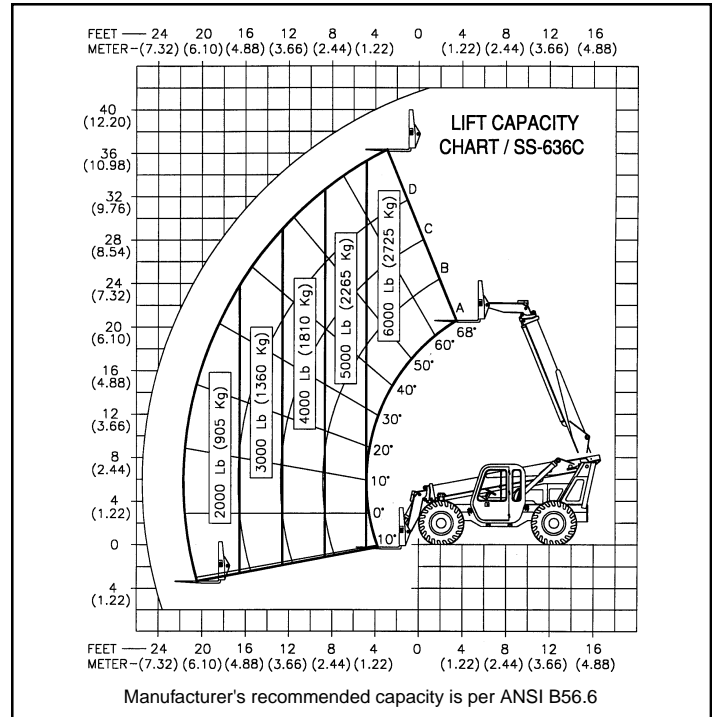
Type Twin, Circuit Isolated, Cylinders
Range 10° Either Side of Center

EXTENSION BOOM 3 Section Roller

AUTOMATION

Type Hydromechanical
Operation One Controller
Fork Function Self-leveling Throughout Lift/Lower Cycles and No Separate Slave Cylinder
Traverse Function (Optional) Level Traverse at any Boom Angle/Extension up to full Cylinder Stroke

For more information, product demonstration, or details on lease and rental plans, please contact your local Terex Handlers Distributor.



STANDARD EQUIPMENT

Single controller for all boom and fork functions • Heavy duty 3 section boom • Self-leveling fork frame • 2" x 4" x 48" (5.1 cm x 10.2 cm x 1.22 m) forks • Premium hydraulic cylinders • Motion control valves in the lift, fork, extend and frame leveling circuits • Pilot operated on-demand hydraulics • 10 micron return hydraulic filter • 100 HP John Deere Turbo-charged diesel engine • Dry type air cleaner • Dirt and water fuel filtration • 31-5 (1,000 CCA @ 0°F) battery • 95 AMP alternator • 3 speed powershift transmission with a service brake operated clutch cut off • 2 heavy duty steering planetary axles • 4 wheel (2 wheel & oblique) power steering • 1300 x 24 12-ply tires • Enclosed multiplate oil-cooled service and parking brakes/ accumulator backup • 10° either side of center frame leveling with indicator • Lockable fuel and hydraulic tank caps • Hourmeter • Removable gauge panel with surface-mounted fuse holder and circuit breakers • Gauges for: fuel level, transmission oil temperature, transmission clutch pressure, engine oil pressure, engine coolant temperature and electrical system voltage • Keyed start switch • Adjustable upholstered seat with seat belt • Back up alarm and rear view mirror • Hydraulic pressure connections are SAE O-ring or JIC • Pins are hardened and ground, bushings are of high compressive strength material, hardware is grade 8 • ISO mounted canopy

OPTIONAL EQUIPMENT

Hydromechanical Level Traverse System • Fully enclosed cab • Heater • Defroster fan • Wiper • Turn signal & hazard flasher package • Cubing tines • Rubbish bucket (1 yard) • 60" & 72" (1.52 m & 1.83 m) wide fork frame • 48", 60", and 72" (1.22 m, 1.52 m, and 1.83 m) rotating fork frames • Lights: Headlights, brake, tail and rear flood • Foam-filled tires • Cummins B3.9 C-100 Turbo-charged diesel engine • Quik-Switch Attachment • Window guard • Suspension seat • Right hand cab panel w/sliding window

We reserve the right to amend these specifications at any time without notice. The only warranty applicable is our standard written warranty applicable to the particular product and sale. We make no other warranty, expressed or implied.

TEREX HANDLERS

455 N. Superior Ave./ P.O. Box 248
Baraga, MI 49908-0248 USA
(906) 353-6675 • FAX: (906) 353-7543
E-mail: baraga@terexlifting.com

www.terexlift.com